



LEGO® Bags Product Catalogue

20
14



LEGO® Bags

Testing the School Bags	3
Explorer School Bag	4-5
Premium School Bag	6-7
Starter School Bag	8-9
Light Weight School Bag	10
Backpack Trolley	11
Small Danish	14-15
Large Danish	16-17
Small Danish set	18
City Police School Bags	19
Ultimate School Bag	20-21
Easy School Bag	22-23
Outdoor School Bag	24
Norwegian School Bag	25
Light Backpack	26
Travel Bag	27
Kindergarten ERGO	28
Small Kindergarten Backpack ...	30
Pencil Case	31



LEGO® Bags are produced 100% without use of PVC, nickel and dangerous AZO-dye



LEGO® Bags speak great quality, unique design and ergonomic comfort



Lightweight: Many of the LEGO® school bags are lightweight styles with weight of only 760-890 g



All LEGO® school bags are equipped with reflective and florescent material to make the child visible in traffic



Testing of the Danish School Bags



The bag will be tested and graded for ergonomics, design, and operation, strength of the straps, buckles and zip. Finish and information, for example, will also be checked.

Each category will be given points on a 5-scale with the calculation of final/overall grade on the basis of weighting, given that aspects such as ergonomics (35%) and design (25%) as well as operation of the bag (20%) are weighted the highest.

Grading

On the whole, the results will be judged according to this grading scale:

OVERALL GRADE	TEXT
Score \geq 4,5	Particularly Good
$4,0 \leq$ score $<$ 4,5	Very Good
$3,5 \leq$ score $<$ 4,0	Good
$3,0 \leq$ score $<$ 3,5	Average
$2,0 \leq$ score $<$ 3,0	Below Average
Score $<$ 1,9	Inferior

Standard content

Several tests will be conducted with contents for a typical packing/weight for a child in pre-school or 2nd grade in the form of books, folders, contact book, pencil case, drinking bottle and lunch box as well as electronic toys for the older children. However, the bag will be tested without possibly provided gym bags for comparison with other bags.

Ergonomics

The school bags' ergonomic qualities will be assessed in relation to children who are representative for the aver-

age-sized children from the ForbrugerLaboratoriet's children user panel.

The following parameters will be included under ergonomics:

- the design, width and length of the back piece
- chest strap and its placement
- length, width and placement of shoulder straps as well as
- the weight and depth of the bag

Design

The design of the school bag will be tested with standard content and the following parameters will be included:

- placement of books and contact book
- space for pencil case, lunch box and drinking bottle
- placement of reflectors
- loose straps and cords, including risk of snagging/getting stuck

Operation

The school bag will be tested for operation-friendliness for children and, in part, for adults on the following parameters:

- adjustment of shoulder straps and chest strap
- accessibility to the compartments in the bag as well as strap for hanging up
- use of buckles and zip as well as stability with standard content

Strength

Straps and loop in the zip will be tested by pulling on the straps' fixing points one at a time with a pull corresponding to 20-35 kg as well as the strength of the buckles against impact.

Other aspects of grading importance

The bag and provided information will be assessed for informative content/user instructions as well as age group (age or class year) as well as any sharp edges in plastic or metal.

Other aspects not of grading importance

Rain-proofing will be tested without possibly provided rain cover by exposing the bag to a brief, heavy shower. The compartments of the bag will be filled with cotton fabric and all zips and flaps will be closed. After the shower, the fabric and internal parts will be inspected for permeated water. It will be noted if a rain cover is provided with the bag. Special remarks will be noted in the report.

PVC materials will be attempted to be identified by using a flame test on relevant materials. If the flame test is negative, then PVC has not been used.

PVC is not a prohibited material, but since it is detrimental to the environment and can be softened with phthalates, a relevant remark will be added to the assessment unless other documentation or test establishes that PVC is not present.

CE labelling of possibly provided toys will be checked.

Supplementary

During the test in the laboratory, a detailed internal test schedule will be used to ensure consistent testing. There is a different methodology/data for the two groups of children (pre-school or 2nd grade), but they are based on the same parameters.

For test results see page 14-15, 16-17, 18 and 20-21.



Explorer School Bag with 3 Parts



LEGO FRIENDS ALL GIRLS Art. No.: 14093

NEW 2014



EXPLORER SCHOOL BAG:
 Weight: 1200 g
 Volume: 18 l
 Dimensions: W:29 x H:41 x D:28 cm

LEGO® SET CONTENT:

- Explorer School Bag
- Drawstring Bag
- Pencil case with content

4



LEGO CHIMA LION Art. No.: 14091



LEGO CHIMA GORILLA Art. No.: 14092



LEGO FRIENDS FIREWORKS Art. No.: 14094



LEGO FRIENDS RASPBERRY Art. No.: 14095

Explorer School Bag with 3 Parts

Explorer School Bag



Padded tablet compatible room

Pencil case with content



Drawstring Bag



Detachable key ring



Ergonomically shaped back panel with wide adjustable shoulder straps. Adjustment of shoulder straps can be done both at the top and at the bottom of straps for an optimal comfort and better fit. The school bag has a 3 levels adjustable chest buckle and a padded hip buckle belt that can be hidden away.



Studs are small in the front & large in the back to keep stability when lid is open



Optimal safety: Reflective and fluorescent material is placed on all sides of the school bag to ensure visibility in traffic

The Explorer school bag has a thermo isolated front pocket for a lunchbox and a special pocket designed to hold the pencil case inside the bag. The bag also has two side pockets; one in mesh another is a zipper pocket.





Premium School Bag with Pencil Case



LEGO CHIMA LION Art. No.: 14151



LEGO CHIMA GORILLA Art. No.: 14152



LEGO FRIENDS ALL GIRLS Art. No.: 14153



LEGO FRIENDS FIREWORKS Art. No.: 14154

6



LEGO FRIENDS RASPBERRY Art. No.: 14155



LEGO BRICK GIRL Art. No.: 14156



LEGO BRICK BOY Art. No.: 14157

NEW 2014

LIGHT-WEIGHT 700 g



PREMIUM SCHOOL BAG:
Weight: 700 g
Volume: 15 l
Dimensions: W:33 x H:38 x D:24 cm

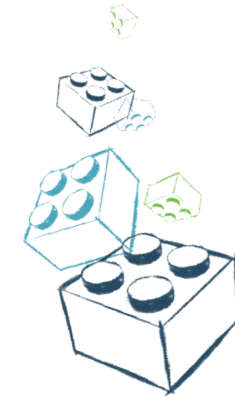
Premium School Bag with Pencil Case

Premium School Bag



Ergonomically shaped back panel and adjustable straps with a breast buckle that can be custom fit.

Pencil case with content



Special pocket designed to hold the pencil case that comes with the bag.



The inner elastic strap in the bag makes it possible to pack the heaviest objects closest to the back.

Convenient mesh pocket with room for a drinking bottle and a front pocket.



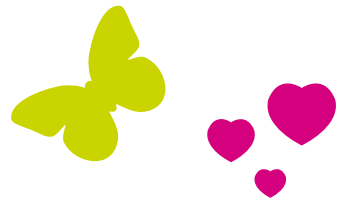
Visible reflections on all sides of the bag.



Starter School Bag with 3 Parts



LEGO FRIENDS FIREWORKS Art. No.: 14064



NEW 2014



LIGHT-WEIGHT
800 g

STARTER SCHOOL BAG:
Weight: 800 g
Volume: 18 l
Dimensions: W:29 x H:15 x D:39 cm

LEGO® SET CONTENT:

- Starter School Bag
- Drawstring Bag
- Water bottle

8



LEGO FRIENDS RASPBERRY Art. No.: 14065



LEGO FRIENDS ALL GIRLS Art. No.: 14063



LEGO CHIMA LION Art. No.: 14061



LEGO CHIMA GORILLA Art. No.: 14062

Starter School Bag with 3 Parts

Starter School Bag



Water bottle ca. 0,4 l



Drawstring Bag

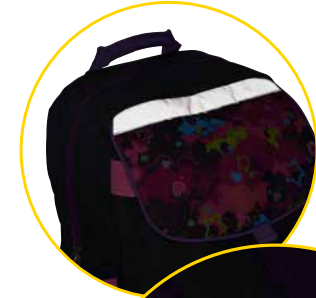


Ergonomically shaped back panel and adjustable straps with a breast buckle that can be custom fit.

Visible reflections on all sides of the bag.



The Starter schoolbag has an inner elastic strap that makes it possible to have the heavy books nearest to the back.



Front pocket and two large side pockets that among other things can hold the water bottle.



Easy to clean bottom panel.



Light Weight School Bag



LIGHT-WEIGHT
730 g



LEGO CHIMA GORILLA Art. No.: 14342



LEGO CHIMA LION Art. No.: 14341



LEGO FRIENDS ALL GIRLS Art. No.: 14343



LEGO FRIENDS FIREWORKS Art. No.: 14344

10



LEGO FRIENDS RASPBERRY Art. No.: 14345



LEGO BRICK GIRL Art. No.: 14348



LEGO BRICK BOY Art. No.: 14347



LIGHT WEIGHT SCHOOL BAG:
Weight: 730 g
Volume: 24 l
Dimensions: W:32 x H:18 x D:45 cm

Backpack with wheels and retractable handle



LEGO CHIMA GORILLA Art. No.: 14371



Straps can be hidden away when used as trolley.



Wheel cover when used as backpack.

NEW 2014



LEGO FRIENDS FIREWORKS Art. No.: 14374



LEGO BRICK GIRL Art. No.: 14378



LEGO BRICK BOY Art. No.: 14377

BACKPACK:
 Weight: 1500 g
 Volume: 24 l
 Dimensions: W:35 x H:18 x D:52 cm







Small Danish School Bag



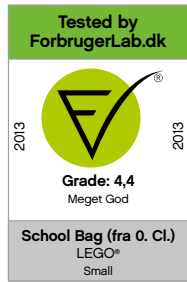
LEGO CHIMA GORILLA Art. No.: 14032



SMALL DANISH SCHOOL BAG:
 Weight: 760 g
 Volume: 22 l
 Dimensions: W:28 x H:38 x D:19 cm

LEGO® SET CONTENT:

- Small Danish School Bag
- Attachable gym bag
- Water bottle
- Lunchbox



14



LEGO CHIMA LION Art. No.: 14031



LEGO FRIENDS ALL GIRLS Art. No.: 14033



LEGO FRIENDS FIREWORKS Art. No.: 14034



LEGO FRIENDS RASPBERRY Art. No.:14035

Small Danish School Bag



Small Danish school bag



Water bottle ca. 0,4 l



Lunchbox



Attachable gym bag



LIGHT-WEIGHT
760 g

Ergonomically shaped back panel.



The inner elastic strap in the bag makes it possible to pack the heaviest objects closest to the back.



The gym bag is easily attached on top of the bag, but can also be used as a separate small backpack.



Visible reflections on all sides of the bag.



Firm bottom panel.

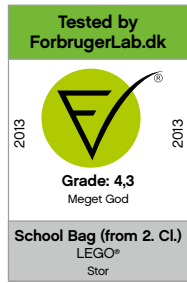


Large Danish School Bag

Also available in the Asian version (EVA bottom panel - see p. 19)



LEGO FRIENDS RASPBERRY Art. No.: 14025



LARGE DANISH SCHOOL BAG:
 Weight: 840 g
 Volume: 28 l
 Dimensions: W:29 x H:40 x D:23 cm

LEGO® SET CONTENT:

- Large Danish School Bag
- Attachable gym bag
- Water bottle
- Lunchbox

16



LEGO CHIMA LION Art. No.: 14021



LEGO CHIMA GORILLA Art. No.: 14022



LEGO FRIENDS ALL GIRLS Art. No.: 14023



LEGO FRIENDS FIREWORKS Art. No.: 1 4024

Large Danish School Bag

Also available in the Asian version (EVA bottom panel - see p. 19)

Large Danish School Bag



Water bottle ca. 0,4 l



Lunchbox



Attachable gym bag



LIGHT-WEIGHT
840 g

Ergonomic back panel with wide, padded and adjustable straps.



The inner elastic strap in the bag makes it possible to pack the heaviest objects closest to the back.



Front pocket with thermo isolation and a mesh side pocket that can hold the water bottle.



The gym bag is easily attached on top of the bag, but can also be used as a separate small backpack.



Convenient mesh pocket with room for the included drinking bottle.

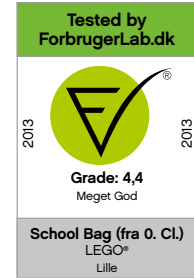


Firm bottom panel.



Small Danish School Bag Set with 6 Parts

LEGO FRIENDS ALL GIRLS Art. No.: 14043



SMALL DANISH SCHOOL BAG:
 Weight: 760 g
 Volume: 22 l
 Dimensions: W:28 x H:38 x D:19 cm

LEGO® SET CONTENT:

- Small Danish School Bag
- Attachable gym bag
- Pencil case with content
- Water bottle
- Lunchbox
- Travel Bag (without wet compartment)

18



LEGO CHIMA LION Art. No.: 14041



LEGO CHIMA GORILLA Art. No.: 14042



LEGO FRIENDS FIREWORKS Art. No.: 14044



LEGO FRIENDS RASPBERRY Art. No.: 14045

City Police School Bags

Small Danish School bag
LEGO POLICE Art. No.: 14036



Large Danish School bag
LEGO POLICE Art. No.: 14026



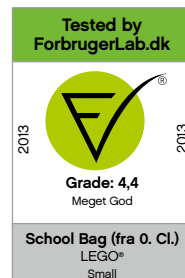
LEGO POLICE Art. No.: 14446



contents included

SMALL DANISH SCHOOL BAG:

Weight: 760 g
Volume: 22 l
Dimensions: W:28 x H:38 x D:19 cm

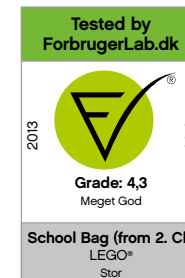


LEGO® SET CONTENT:

- Small Danish School Bag
- Attachable gym bag
- Water bottle
- Lunchbox

LARGE DANISH SCHOOL BAG:

Weight: 840 g
Volume: 28 l
Dimensions: W:29 x H:40 x D:23 cm



LEGO® SET CONTENT:

- Large Danish School Bag
- Attachable gym bag
- Water bottle
- Lunchbox



Ultimate School Bag Set with 4 Parts



LEGO CHIMA LION Art. No.: 14011

ULTIMATE SCHOOL BAG:

Weight: 1100 g
Volume: 18 l
Dimensions: W:30 x H:41 x D:25 cm

LEGO® SET CONTENT:

- Ultimate School Bag
- Attachable gym bag
- Water bottle
- Lunchbox



UNIQUE DESIGN

- Individual fit system
- Perfect and symmetrical fit
- Even weight distribution



For a perfect fit, the school bag comes with a measuring tape and a guide for adjusting the school bag to the individual child's need.

20



LEGO CHIMA GORILLA Art. No.: 14012



LEGO FRIENDS ALL GIRLS Art. No.: 14013



LEGO FRIENDS FIREWORKS Art. No.: 14014



LEGO FRIENDS RASPBERRY Art. No.: 14015

Ultimate School Bag Set with 4 Parts

Ultimate School Bag



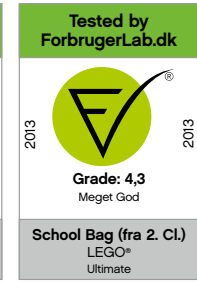
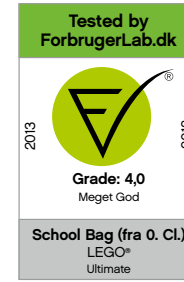
Water bottle ca. 0,4 l



Lunchbox



Attachable gym bag



The unique designed fit system ensures that the school bag stays in place with the adjustments made by the child's parents. The system supports the child's back in the best possible way by distributing the weight evenly between the wide shoulder straps.



The gym bag is easily attached on top of the bag, but can also be used as a separate small backpack.



The Ultimate school bag has a thermo isolated front pocket for the lunchbox, a side pocket for the water bottle and a fruit pocket with water repellent material that can be easily cleaned with a cloth.



Increased height of the bag, to fit an A4 folder inside when pencil case is placed inside top lid.



Firm bottom panel.



Optimal safety: Reflective material is placed on all sides of the school bag to ensure visibility in traffic.



Easy School Bag with 3 Parts



LEGO CHIMA GORILLA Art. No.: 14072



EASY SCHOOL BAG:
 Weight: 760 g
 Volume: 19 l
 Dimensions: W:30 x H:40 x D:23 cm

LEGO® SET CONTENT:

- Easy School Bag
- Drawstring Bag
- Pencil case with content

22



LEGO CHIMA LION Art. No.: 14071



LEGO FRIENDS ALL GIRLS Art. No.: 14073



LEGO FRIENDS FIREWORKS Art. No.: 14074



LEGO FRIENDS RASPBERRY Art. No.: 14075

Easy School Bag with 3 Parts

Easy School Bag



Reflective and fluorescent material is placed on all sides of the school bag to ensure visibility in traffic

Pencil case with content



Drawstring Bag



LIGHT-WEIGHT
760 g



Ergonomically shaped back panel with wide adjustable and well padded shoulder straps and breast buckle that can be custom fit.



The Easy school bag has a special front pocket designed to hold the pencil case. By placing the pencil case in this pocket more space is given to the books, papers etc. in the large compartment. An inner room divider makes it possible to place the heaviest books closest to the child's back.



Firm bottom panel.



Outdoor School Bag Set with 4 Parts

LIGHT-WEIGHT
800 g

LEGO CHIMA LION Art. No.: 14081



LEGO FRIENDS RASPBERRY Art. No.: 14085



24



Side mesh pocket with room for the waterbottle that comes with the bag.



The gym bag is easily attached on top of the bag, but can also be used as a separate small backpack.



Attachable Pencil Roll inside the bag.



Easy to clean bottom panel.

LEGO® SET CONTENT:

- Outdoor School Bag
- Attachable gym bag
- Pencil roll
- Water bottle

OUTDOOR SCHOOL BAG:

Weight: 800 g
Volume: 14 l
Dimensions: W:27 x H:38 x D:20 cm

Norwegian Backpack

LEGO FRIENDS ALL GIRLS Art. No.: 14383



NORWEGIAN BACKPACK:

Weight: 600 g

Volume: 17 l

Dimensions: W:23 x H:36 x D:25 cm



LEGO CHIMA LION Art. No.: 14381



LEGO CHIMA GORILLA Art. No.: 14382



LEGO FRIENDS FIREWORKS Art. No.: 14384

LIGHT-WEIGHT
600 g



Light Backpack with Pencil Roll



LEGO CHIMA GORILLA Art. No.: 14192

LEGO CHIMA LION Art. No.: 14191

26



LEGO FRIENDS FIREWORKS Art. No.: 14194



LEGO FRIENDS RASPBERRY Art. No.: 14195



LIGHT-WEIGHT
260 g

LEGO® SET CONTENT:

- Light Backpack
- Pencil roll

LIGHT BACKPACK:
Weight: 260 g
Volume: 14 l
Dimensions: W:26 x H:38 x D:19 cm

LEGO FRIENDS ALL GIRLS Art. No.: 14193

Travel Bag

LEGO FRIENDS FIREWORKS Art. No.: 14434

LIGHT-WEIGHT
420 g

TRAVEL BAG:

Weight: 420 g
Volume: 15 l
Dimensions: W:40 x H:21 x D:23 cm



Separate side zipper pocket with wet compartment for shoes or wet clothes

2014 UPDATE



LEGO CHIMA LION Art. No.: 14431



LEGO CHIMA GORILLA Art. No.: 14432



LEGO FRIENDS ALL GIRLS Art. No.: 14433



LEGO FRIENDS RASPBERRY Art. No.: 14435





Kindergarten ERGO



LEGO CHIMA LION Art. No.: 14411



LEGO FRIENDS ALL GIRLS Art. No.: 14413



LEGO FRIENDS RASPBERRY Art. No.: 14415



LEGO FRIENDS FIREWORKS Art. No.: 14414



LIGHT-WEIGHT
360 g

LEGO CHIMA GORILLA Art. No.: 14412

KINDERGARTEN ERGO:
Weight: 360 g
Volume: 15 l
Dimensions: W:29 x H:35 x D:16 cm





Small Kindergarten Backpack



LEGO CHIMA LION Art. No.: 14421



LEGO CHIMA GORILLA Art. No.: 14422

30



LEGO FRIENDS ALL GIRLS Art. No.: 14423



LEGO FRIENDS FIREWORKS Art. No.: 14424



LIGHT-WEIGHT
240 g

LEGO FRIENDS RASPBERRY Art. No.: 14425

SMALL KINDERGARTEN BACKPACK:
Weight: 240 g
Volume: 6 l
Dimensions: W:22 x H:32 x D:16 cm

Pencil Case with Content



LEGO CHIMA LION Art. No.: 14441



LEGO CHIMA GORILLA Art. No.: 14442



LEGO FRIENDS FIREWORKS Art. No.: 14444



LEGO FRIENDS RASPBERRY Art. No.: 14445



LEGO FRIENDS ALL GIRLS Art. No.: 14443



LEGO BRICK GIRL Art. No.: 14448



LEGO BRICK BOY Art. No.: 14447



PENCIL CASE:
 Weight: 310 g
 Volume: 0,5 l
 Dimensions: W:12 x H:4 x D:18 cm



BBM ApS
Balticagade 12, 2.
DK-8000 Aarhus C
Tel. +45 7020 7299
Fax +45 7020 7399

info@bbm-europe.com
www.bbm-europe.com
www.legobags.eu